



# MERLO

## P 40.17 STABILIZERS

*Since 1994*  
**PREMIER**  
PLATFORMS, INC.  
**800-951-2555**

- MAXIMUM LOAD CAPACITY: 8,800 LBS
- MAXIMUM LIFT HEIGHT: 55'
- MAXIMUM REACH: 41'
- LIFT CAPACITY AT MAXIMUM LIFT HEIGHT: 5,500 LBS
- LIFT CAPACITY AT MAXIMUM FORWARD REACH: 1,100 LBS



### WE'VE MOVED!

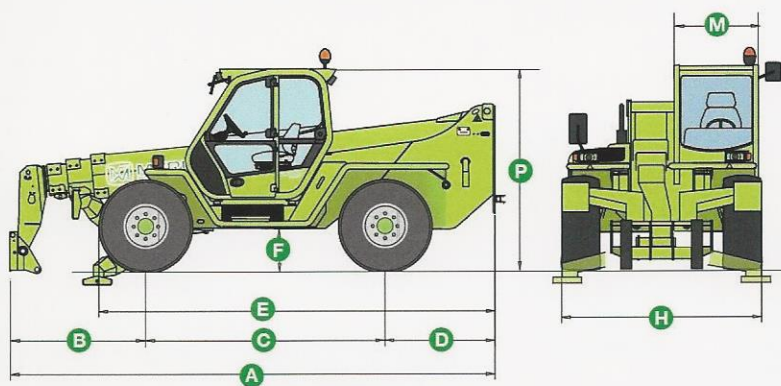
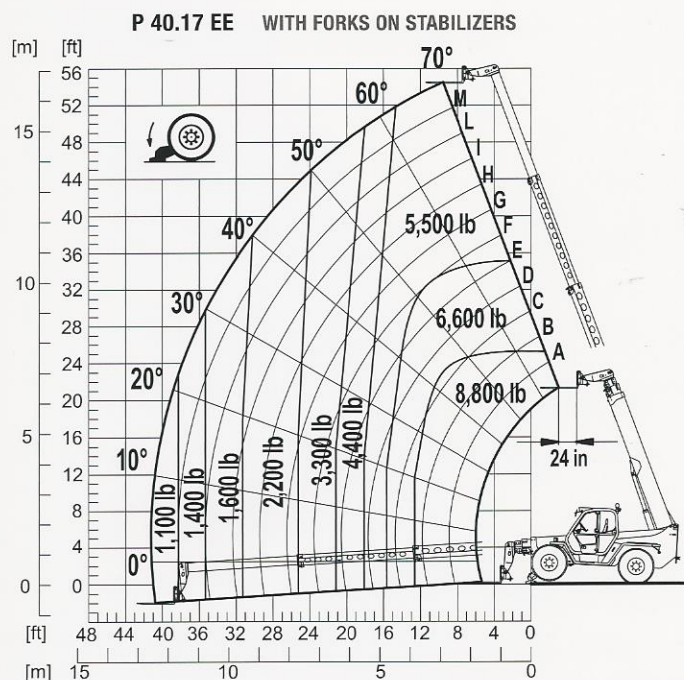
1205 Galleria Blvd.  
Rock Hill, SC 29730  
PH: (803) 327-4949  
Fax: (803) 327-4952  
[www.AMS-Merlo.com](http://www.AMS-Merlo.com)



# SPECIFICATIONS: P 40.17 STABILIZERS



Power / 4 Cylinder Turbo Diesel .....	Perkins/101 HP
Transmission .....	2 Speed / Hydrostatic
Maximum Speed .....	25 MPH
Total Unladen Mass (with forks) .....	22,800 LBS
Boom Sideshift (Inches) .....	Standard / 17
Frame Leveling .....	Standard / $\pm 10\%$
Load Sensing Hydraulic Pump (PSI-gal/min) .....	3,045-28.5
Fuel Capacity .....	40 Gallons
Hydraulic Oil Capacity .....	37 Gallons
Tires .....	405/70-24
Turning Radius .....	13'-3"
4 Wheel Drive / 3 Steering Modes .....	Standard
Hydraulic System .....	Load-sensing
Control and Command Center .....	Electronic MERlin
Independent Front Stabilizers .....	Standard



## Dimensions (FT)

A	19'-0"	D	4'-3"	H	7'-9"
B	5'-0"	E	15'-8"	M	3'-3"
C	9'-4"	F	1'-6"	P	8'-3"

## DEALER INFORMATION:

